

A close-up, slightly angled view of a guitar fretboard. The frets are made of a light-colored wood, and the strings are a dark color. The background is dark and out of focus.

Guitar for Beginners

Lesson 1: Playing G and A

Lesson 1

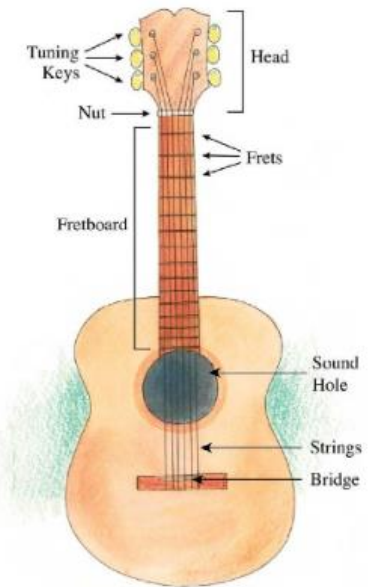
How to Sit and Hold the Guitar

- Sit up straight on the front part of the chair.
- Cross your legs, and place your **guitar** on your right leg, as shown in the picture.
- The **guitar** should be close to your body in an upright position.



Parts of the Guitar

The following diagram shows the names of the main parts of a **guitar**.



Using the pick and playing notes

Right Hand: Using the Pick

- The right hand is used to play the strings by plucking them with a pick. A pick is a **piece** of plastic shaped like a triangle.
- Hold the pick **lightly** between your thumb and first finger, as shown in the picture.
- Only use the tip of the pick to play the strings.
- When you are playing a note, support your hand by placing your second and third fingers on the body of the **guitar**.
- Pick the strings over the sound hole. This makes the best sound.



The pick is also used to play groups of notes called chords.

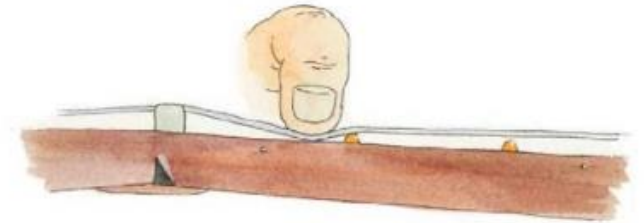


Left Hand: Fingering the Notes

The left hand fingers are used to hold down the strings on the fretboard. Each finger of the left hand is given a number.



To hold down a note with your left hand, place your fingertip just **behind** a fret.

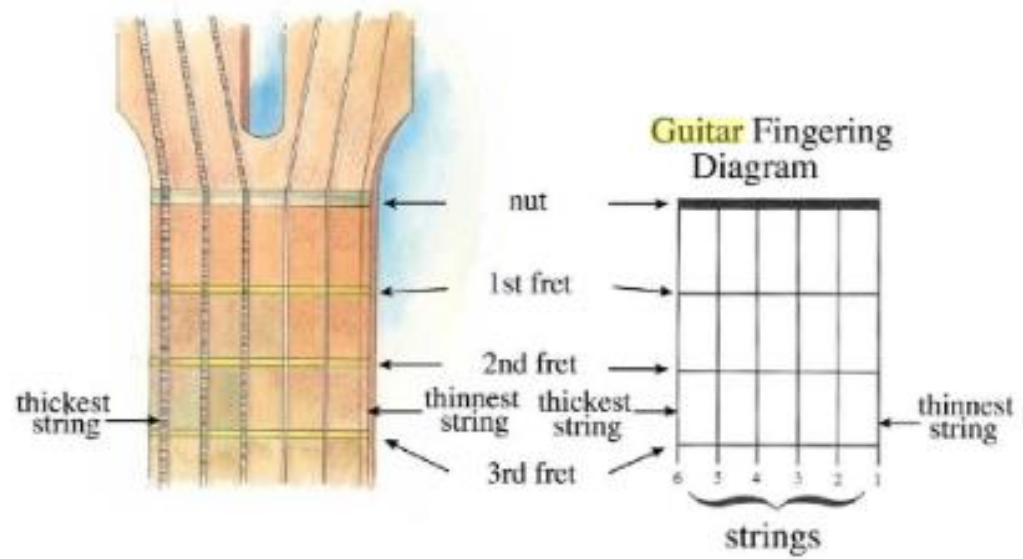


Guitar Fingering Diagram

To show where to play a note, we use a **guitar fingering diagram**.

The six strings of the **guitar** are given numbers. The **thinnest** string is called the first string. The **thickest** string is called the sixth string.

Frets and Strings

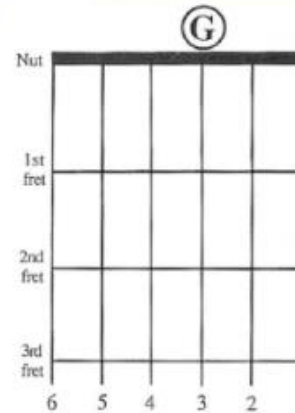


Playing G

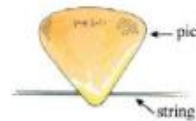
The Open G String

An **open string** is a string which is played without using your left hand fingers. When you play the **open third string** you are playing a **G note**. Hold the pick in your right hand. Pluck the third string over the sound hole with a **downward** motion of your pick. You are now playing the note G. Play four G notes. Remember to play downwards.

The note G is shown on the **guitar** fingering diagram. Because it is played on an open string, the letter G is written **above** the nut in a circle.



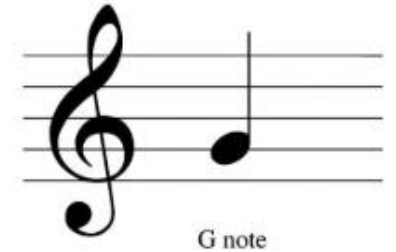
Helpful Hint



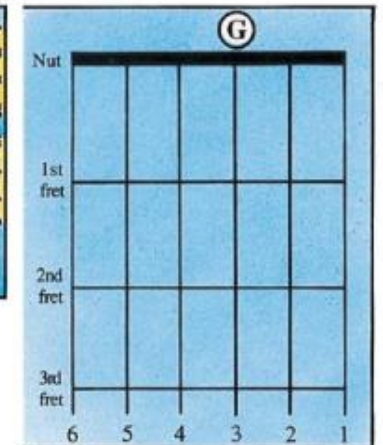
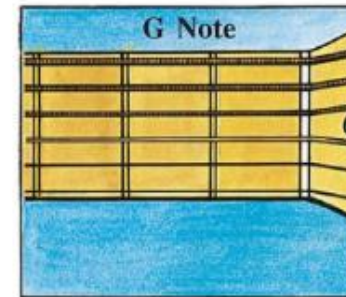
Use the tip of the pick to play the string.



The Note G



This is a **G note**. The note G is placed on the **second** line of the staff. To play the note G, pick the open **third** string.



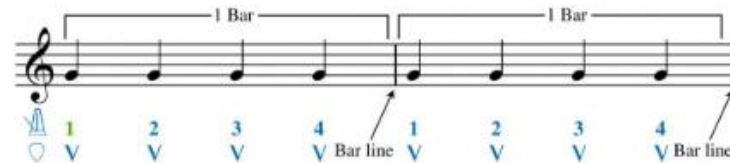
Keeping the beat

Music is divided into **bars** by **bar lines**. In your first song, **G for Giraffe**, there are **two** bars of music. There are four G notes in each bar. As you play the notes in each bar, count **1 2 3 4** aloud.



G for Giraffe

Remember to pick **downwards**. A downward pick is shown below the notes by a **V**. In this **book**, all notes are played with a downward pick movement.



The Four Four Time Signature ($\frac{4}{4}$)

$\frac{4}{4}$



These two numbers are called the **four four time signature**. They are placed after the treble clef. The $\frac{4}{4}$ time signature tells you there are **four** counts in each

bar.



For Four Giraffes

Here are **four** bars of the note G in $\frac{4}{4}$ time. Count aloud as you play.



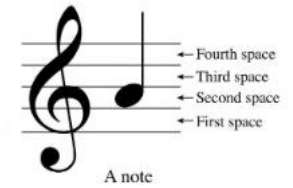
Playing A

Things to Remember

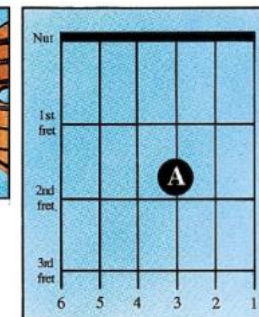
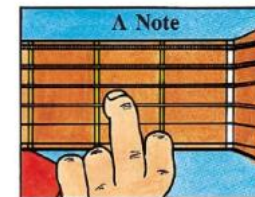
- Sit up straight.
- Keep the **guitar** upright.
- Count aloud as you play the notes.
- Use a downward pick motion.
- Support your right hand.



The Note A



This is an **A** note. The note A is placed in the **second** space of the staff. To play the note A, place the **second** finger of your left hand just behind the **second** fret of the **third** string.



The A Train

When a black dot is written on a **guitar** fingering diagram, it tells you the **position** of the note and where to place your left hand finger.

Place your finger just **behind** the fret. **Do not** place your finger **on** the fret. Be sure to press down hard, and use the **tip** of your finger. If you do not do this, the string will make a buzzing noise.



3

The A Train

This song contains four bars of A notes.



Now practice switching from G to A before moving on to B

B will be on the second string (open string)

Hot Cross Buns

Trad. Street Vendor

The image shows a musical score for the song 'Hot Cross Buns'. It consists of two staves of music. The top staff is a vocal line in G major (one sharp) and 4/4 time. It contains two phrases: 'Hot cross buns!' and 'Hot cross buns!'. The bottom staff is a piano accompaniment line, also in G major and 4/4 time. It features a rhythmic pattern of eighth notes for the first two phrases and a simpler melody for the third. The lyrics 'One - a - pen - ny, two - a - pen - ny, hot cross buns!' are written below the piano staff.

Hot cross buns! Hot cross buns!

One - a - pen - ny, two - a - pen - ny, hot cross buns!